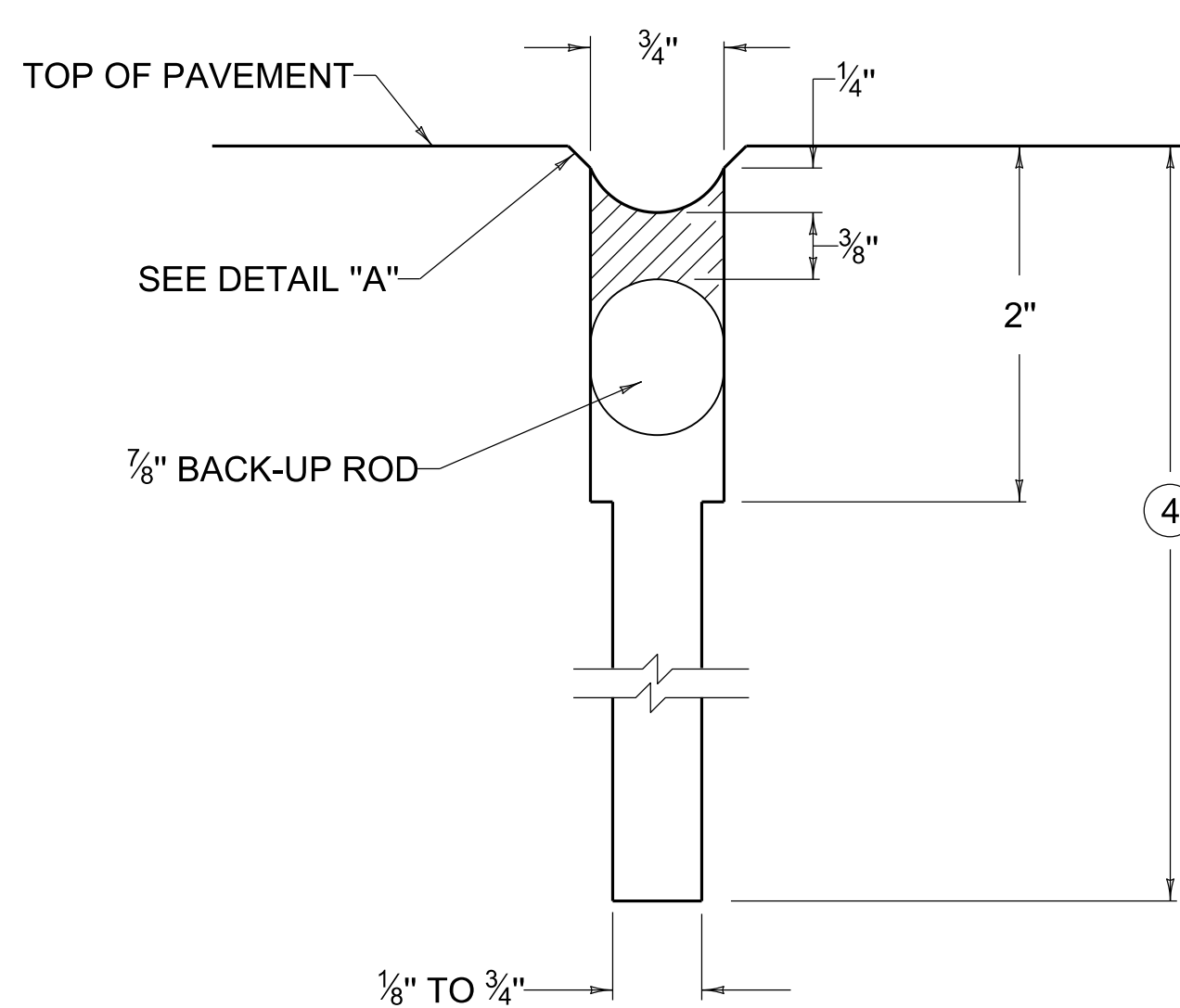
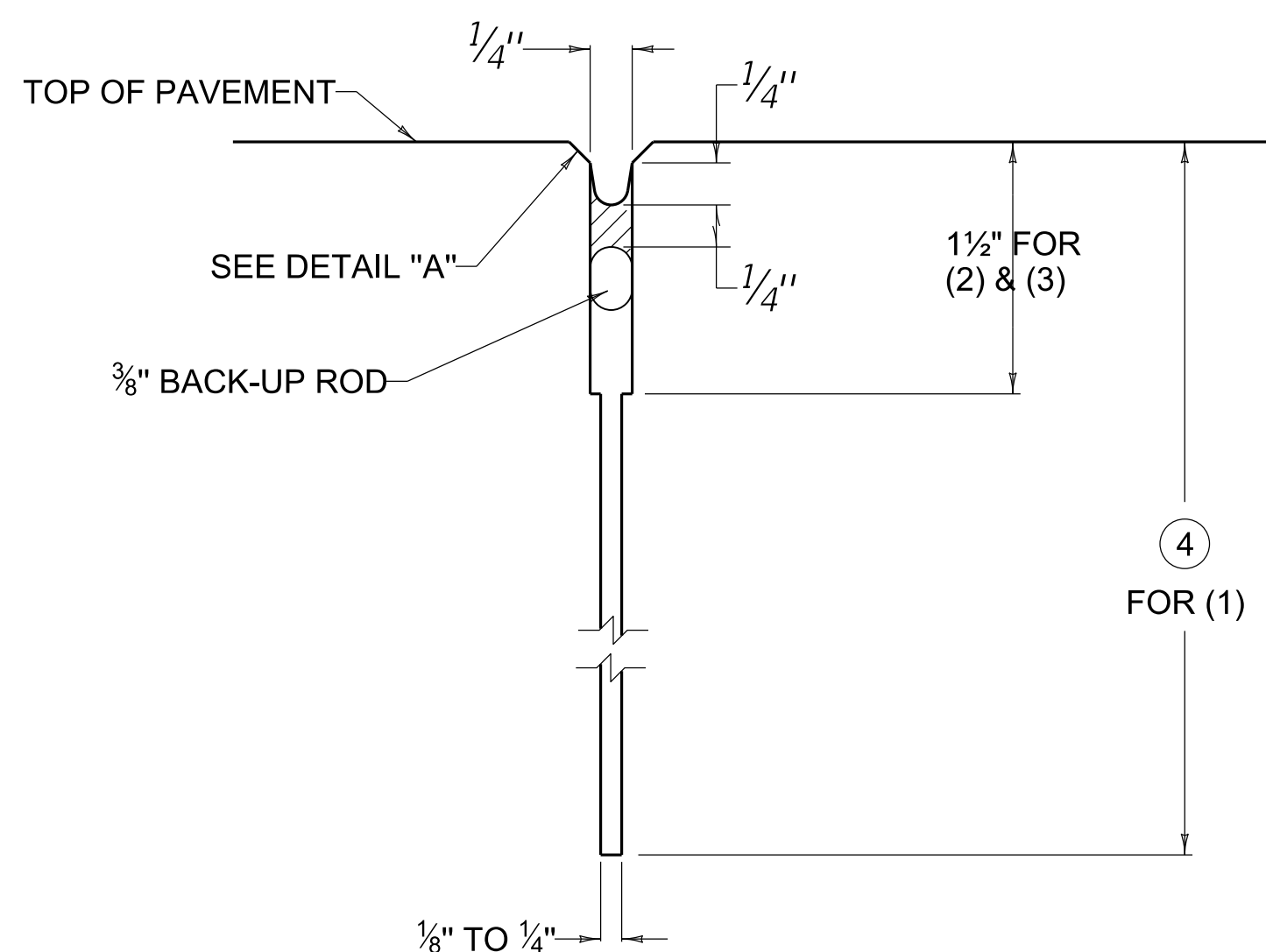


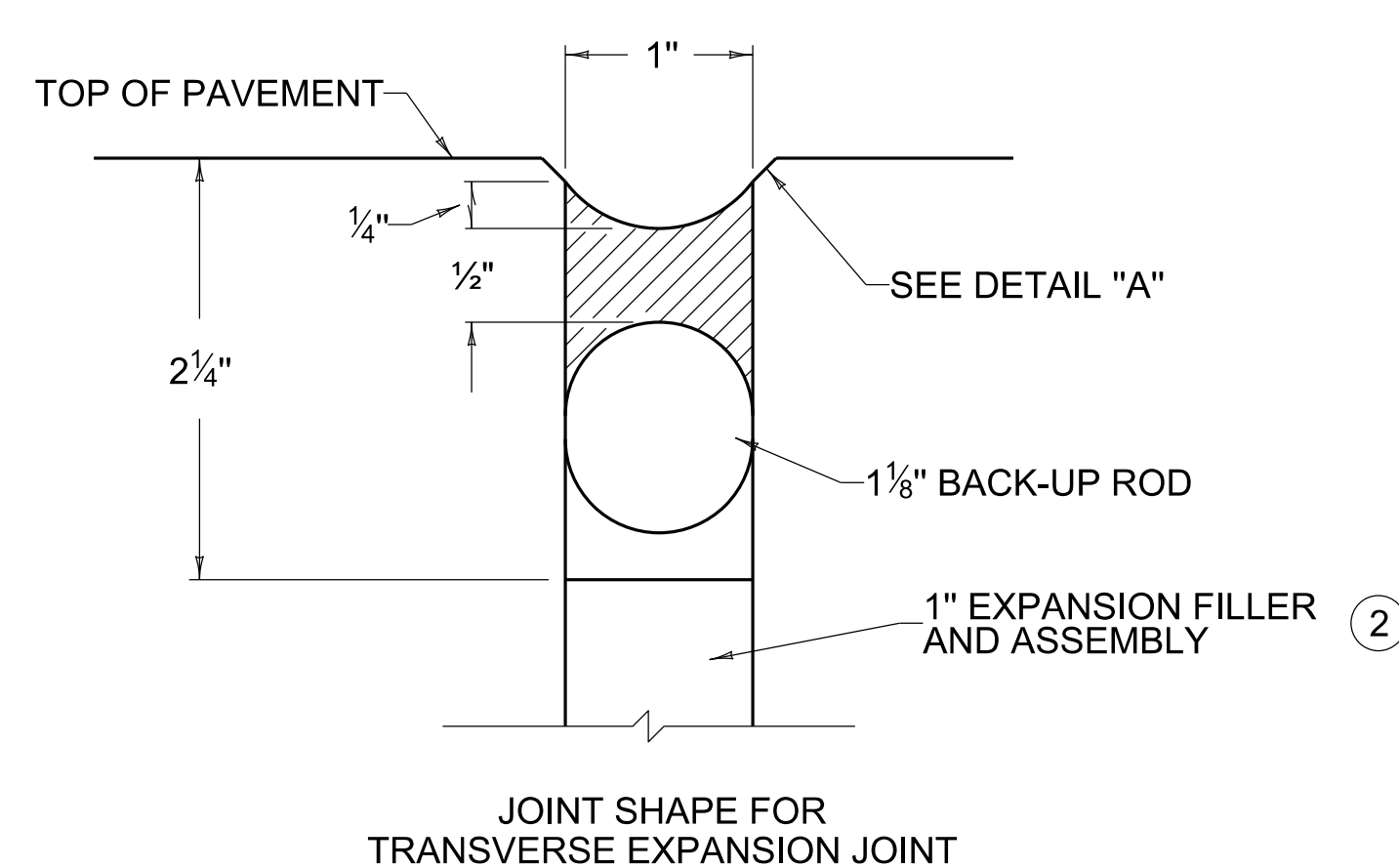
JOINT SHAPE FOR  
TRANSVERSE SAWED CONTRACTION JOINT  
( WHEN SLAB LENGTH DOES NOT EXCEED 25'-0" )



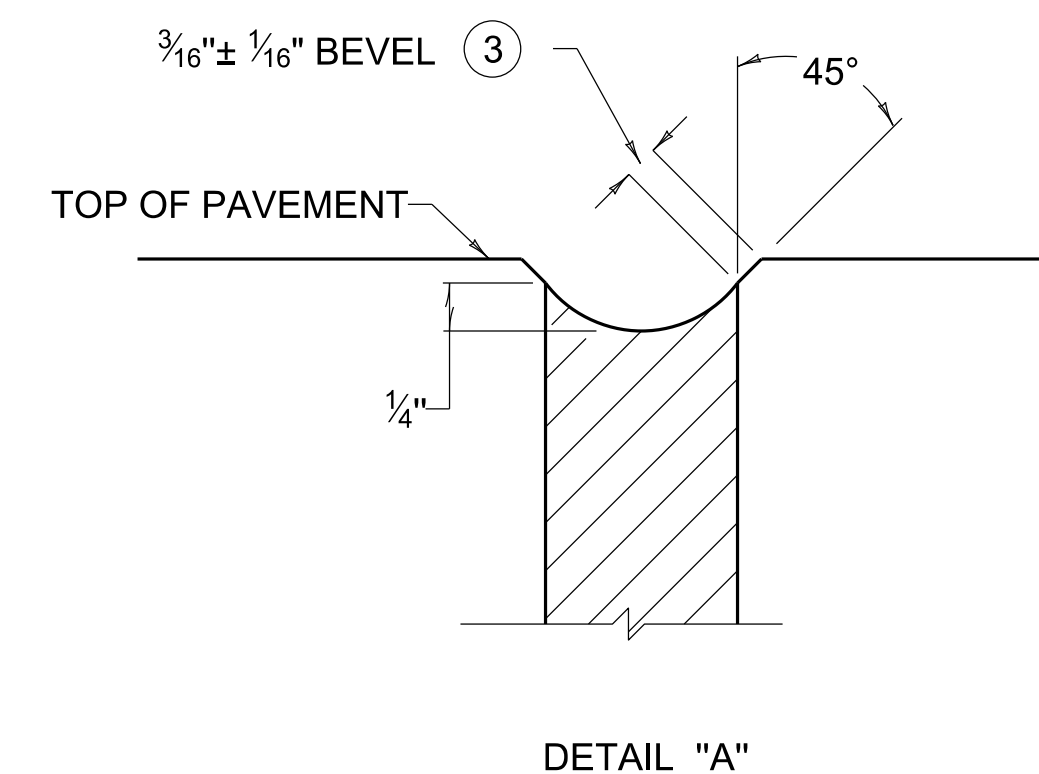
JOINT SHAPE FOR  
TRANSVERSE SAWED CONTRACTION JOINT  
( WHEN SLAB LENGTH EXCEEDS 25'-0" )



JOINT SHAPE FOR  
(1) LONGITUDINAL SAWED JOINT (TIED)  
(2) LONGITUDINAL SAWED CONSTRUCTION JOINT (TIED)  
(3) TRANSVERSE SAWED CONSTRUCTION JOINT (TIED)



JOINT SHAPE FOR  
TRANSVERSE EXPANSION JOINT



DETAIL "A"

# ~ NOTES ~

- PAYMENT FOR WORK SHALL BE INCIDENTAL TO THE UNIT PRICE PER SQ. YD. OF PAVEMENT.
- THE REMAINING JOINT SHALL BE IN ACCORDANCE WITH CUR. STD. DWGS. RPS-020 AND RPS-010
- THESE EDGES SHALL BE BEVELED USING A CUTTING OR GRINDING DEVICE.  
JOINT TOLERANCES:  
SAW CUT DEPTH -0" TO + 1/2"  
SAW CUT WIDTH -0" TO + 1/16"  
SEAL BEAD THICKNESS -0" TO + 1/8"
- JOINT DEPTH IS T/3 OR 4", WHICHEVER IS LESS.  
T = PAVEMENT THICKNESS.  
USE WITH CUR. STD. DWGS.  
RPS-010 RPS-020

REVISION DATE: 12/01/2015  
REVISION NUMBER: 0

SUBMITTED *William S. Sipes* 12-01-2015 DATE  
DIVISION DIRECTOR  
APPROVED *William S. Sipes* 12-01-2015 DATE  
STATE HIGHWAY ENGINEER

PAVEMENT



COMMONWEALTH OF KENTUCKY  
DEPARTMENT OF HIGHWAYS



SEALS

SILICONE RUBBER SEALS FOR CONCRETE PAVEMENT

STANDARD DRAWING NUMBER  
RPX-020-06